

The A-Bet Security Module

User's Guide

Version 1.0

A-Bet Systems Security module

The security module can be configured to add new users, delete old users, and modify the access levels of existing users, through editing the password list. The system Administrator is responsible for using the security program 'Userconf.exe', which resides in the DBF folder. 'Userconf.ini' tells the program where the password and itemlist files are held, and is a text file in the Windows folder. Userlist.pwd and itemlist.pwd usually reside in the Dbf folder.

Editing item maintenance allows the Administrator to associate authority levels with reports and functions within the system.

The Administrator has an authority level of 9, which is the highest. Authority levels run from 1 to 9.

The following functions are configurable in the itemlist.

ID	Function	Security Entry
206	Edit empty bet	Edit empty bet
207	Manual settle	Manual settle bet
208	Void	Void a bet
209	Override prices	Override prices
210	Bet after off	Able to place Bet After the Off
211	Bet after result	Able to place Bet after the Result
212	Adjustments	Adjustments to accounts
213	Settle Any Bet	Able to Settle any bet
214	Transtobankcard	Transfer funds to Bankcard
215	Transfrombankcard	Transfer funds from bankcard
216	Cashinout	Pay cash in/out of account
217	Chequeinout	Pay cheque in/out account
218	Batchauth	Able to Batch bankcard authorisation
219	Batchpayout	Able to batch wager payout
220	Creditoptions	Able to enter 'Credit Options'
221	Switchtoeditclients	Able to switch to Edit Clients from accept wager screen
222	Awardfreebets	Able to award free bets
223	Changecomments	Able to change comments against clients
224	Viewproblemwagers	Able to View Problem Wagers

The following reports and report functions are configurable in the itemlist.

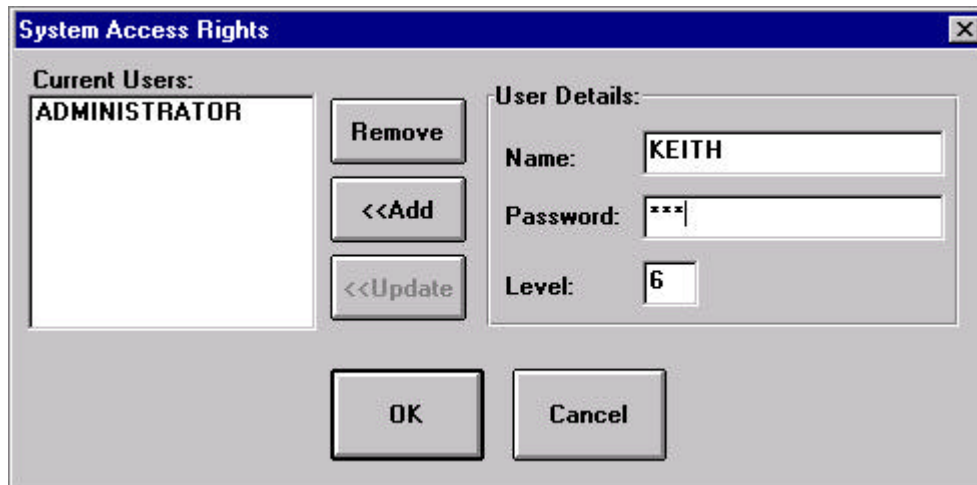
ID	Report Entry	Security Entry
199	Credit reports module	CreditReports
1	Profitability - by Client/Acct Profitability	
6	Clients over Credit Limit	CreditLimit
8	Client Details Listing	AccountListing
9	Client Balances	ClientBalanceList
10	Client Status	ClientStatus
11	Client Activity Report	ActiveClients
15	Transaction Audit	TransactionAudit
16	Large Payouts	LargePayout
17	Business Report	Business
20	Void Bets Audit	VoidBetsAudit
21	Aged Debtors	AgedDebtors
23	Bet Levy	BetLevyAnalysis
24	Bet Duty	BetDutyAnalysis
26	Cheque List	ChequeList
31	Statement List	StatementList
49	Single Statement	Statement
50	Statement Print Run	StatementPrintRun
51	Statement Reprint	StatementReprint
56	Empty Bets Audit	EmptyBetsAudit
57	After Off Audit	AfterTheOff
58	After Result Audit	AfterTheResult
59	Manual Settle Audit	ManuallySettledBets
60	Over-Ridden Prices	OverRiddenPrice
65	Fieldbook	Fieldbook
66	Reconcile Business	ReconcileMoney
67	Client Registration Listing	RegistrationListing
71	Unsettled Bet Audit	UnSettledBets
73	Period Trading Report	PeriodTrading
75	Expiring Cards	ExpiringCards
250	Health Check	HealthCheck

The Administrator should rank the list of users against seniority and then apply a level of authority to the items in the itemlist from 1 to 9 so that the users' own authority level will allow or deny them access to the relevant function or report.

To add a new user to the system.

Select **F**ile and then **U**ser Maintenance from the menu.

Type in the name of the new user. The user will then enter his/her password. Enter the level of security required for the user. Click on <<**A**dd to add the user to the user list.

***To change user details.***

Select the user from the list of current users and amend details as required and ensure that <<**U**ppdate is clicked to update the information.